

## UI EDITOR

### For Customizing AMERGINT GUIs

Tailor your GUI to meet your exact needs

Intuitive drag-and-drop interface—no coding required

Suite of ready to use graphical widgets

## OVERVIEW

AMERGINT systems feature a browser-based User Interface (GUI) to control and status each AMERGINT system. Because operations and testing requirements vary and evolve, we know it is paramount that each system's GUI be customizable. For that reason, AMERGINT developed the UI Editor, an HTML-based drag-and-drop editing tool that enables you to quickly tailor your AMERGINT GUI with the parameters you need in exactly the way you want. **The UI Editor generates all the underlying code—no coding is required.**

Each AMERGINT GUI has one or more tabs (referred to as canvases) to display control and status parameters and other information. Exactly what's on each canvas and how it's displayed is fully customer-defined—you drag the parameters onto the canvas and format how they are displayed using a suite of ready to use graphical widgets.

Use widgets to display control and status parameters, access specialty built-in functionality (such as the AMERGINT system recorder or spectrum analyzer), aid in navigation, or even just enhance design. Example widgets include numeric and text fields, labels, check boxes, buttons, shapes, graphs, custom plots, and many more.

**Tailor your AMERGINT GUI in minutes; create sets of canvases to curate to specific role needs.**

### Use the UI Editor to:



**Create Role-Based Canvases:** Create simple canvases for daily operations or extremely detailed canvases for engineering, maintenance, testing, and system administration.



**Customize Canvas Appearance:** Customize the height, width, spacing, grid line size, and name of the canvas to meet your layout requirements and boost usability.

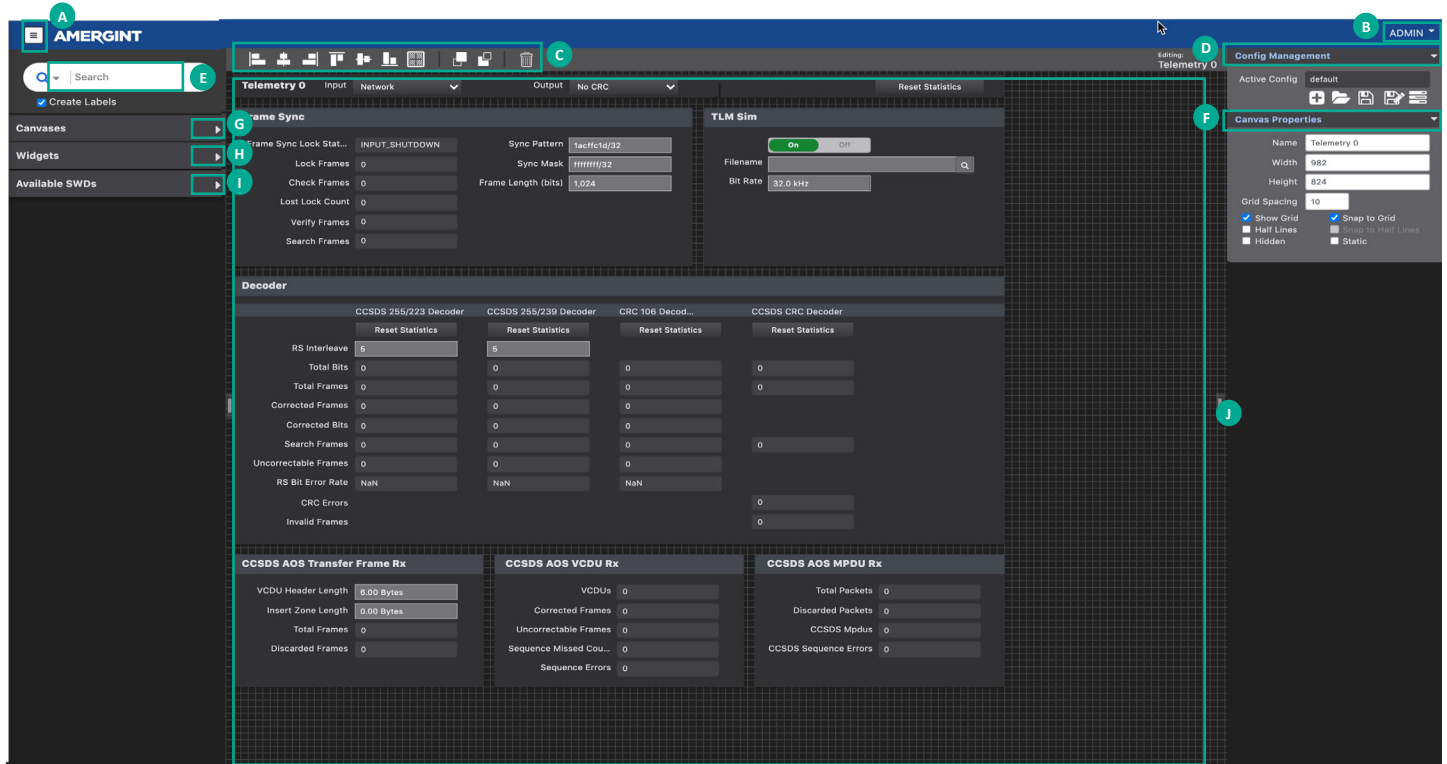


**Customize Widgets:** Display exactly the information you need in exactly the way you want.

- » Control and Status Widgets: Use to display control and status parameters.
- » Specialty Widgets: Use to access complex built-in functionality, such as the AMERGINT recorder, spectrum analyzer, matrix switch, and IQ diagrams.
- » Design Widgets: Use to aid in navigation and enhance design.

## UI EDITOR TOUR

The intuitive, drag-and-drop interface allows you to quickly and easily design and customize AMERGINT canvases. Access to the UI Editor is controlled through user permissions.



Item	Component	Description
A	Menu Icon/Flyout Menu	Access AMERGINT tools, such as the App Manager, TestExec™, inSight™ Analytics, etc.
B	User Group Login	User Group login; access to the UI Editor is controlled through permissions.
C	Widget Formatting Toolbar	Rearrange the alignment of widgets in the drag-and-drop window.
D	Configuration Management Panel	Create, open/load, save, and manage GUI layouts.
E	Search Bar	Search for a specific control and status parameter.
F	Canvas Properties Panel	Specify properties for the selected canvas, such as size, name, and more.
G	Canvases Panel	Access available canvases and options to drag and re-order, add, and delete canvases.
H	Specialty and Design Widgets Panel	Access specialty and design widgets, such as the AMERGINT's system recorder or rectangle.
I	Available Parameters Panel	Access available control and status parameters for the selected canvas.
J	Canvas Design Window	Opens a blank grid space, where you can access and design canvases.

## WE ARE THE LINK

2315 Briargate Pkwy, Suite 100  
 Colorado Springs, CO 80920  
[www.amergint.com](http://www.amergint.com) | [info@amergint.com](mailto:info@amergint.com)  
 719-522-2800



[www.amergint.com](http://www.amergint.com)

@AMERGINT

@AMERGINT

amergint-technologies

