

UI EDITOR

Platform-agnostic options protect your investment

Deploy applications on premise and in the Cloud

Support evolving requirements with seamless migration between platforms

OVERVIEW

Systems developed by ARKA feature a browser-based User Interface (UI) to control and status each AMERGINT system. Because operations and testing requirements vary and evolve, we know it is paramount that each system's UI be customizable. For that reason, AMERGINT developed the UI Editor, an HTML-based drag-and-drop editing tool that enables you to quickly tailor your AMERGINT UI with the parameters you need in exactly the way you want. **The UI Editor generates all the underlying code for the interface—no coding is required.**

Each ARKA UI has one or more tabs (referred to as canvases) to display control and status parameters and other information. Exactly what's on each canvas and how it's displayed is fully customer-defined—you drag the parameters onto the canvases and format how they are displayed using a suite of ready to use graphical widgets.

Use widgets to display control and status parameters, access specialty built-in functionality (such as the ARKA system recorder or spectrum analyzer), aid in navigation, or even just enhance design. Example widgets include numeric and text fields, labels, check boxes, buttons, shapes, graphs, custom plots, and many more.

Tailor your ARKA UI in minutes; create sets of canvases to curate to specific role needs.

USE THE UI EDITOR TO:



CREATE ROLE-BASED CANVASES:

Create simple canvases for daily operations or detailed canvases for engineering, maintenance, testing, and system administration.



CUSTOMIZE CANVAS APPEARANCE:

Customize the height, width, spacing, grid line size, and name of the canvas to meet your layout requirements and boost usability.



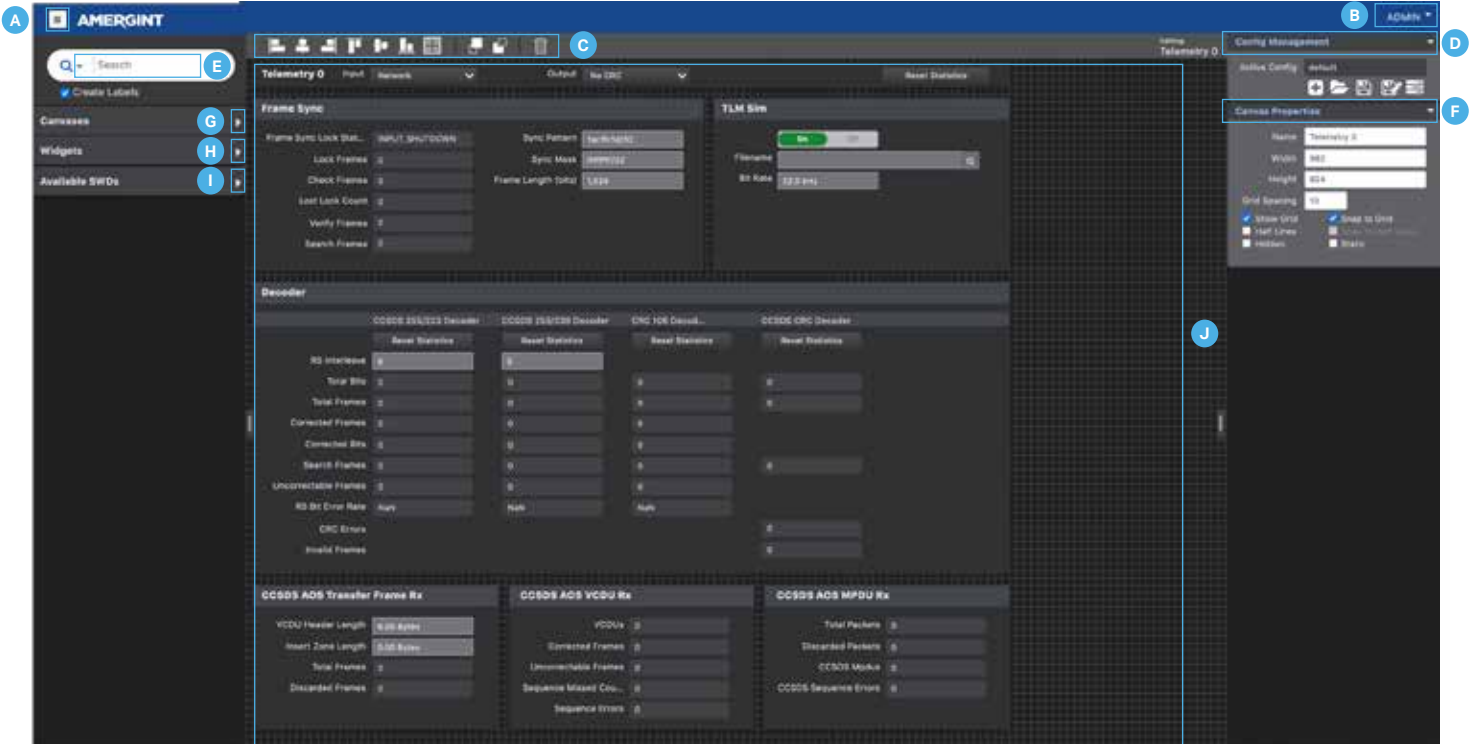
CUSTOMIZE WIDGETS:

Display exactly the information you need in exactly the way you want.

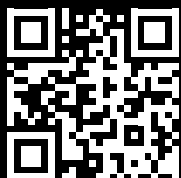
- Control and Status Widgets: Use to display control and status parameters.
- Specialty Widgets: Use to access complex built-in functionality, such as the ARKA recorder, spectrum analyzer, matrix switch, and IQ diagrams.
- Design Widgets: Use to aid in navigation and enhance design.

UI EDITOR TOUR

The intuitive, drag-and-drop interface allows you to quickly and easily design and customize ARKA canvases. Access to the UI Editor is controlled through user permissions.



ITEM	COMPONENTS	DESCRIPTION
A	Menu Icon / Flyout Menu	Access ARKA tools, such as the App Manager, TestExec™, inSIGHT™ Analytics, etc.
B	User Group Login	User Group login; access to the UI Editor is controlled through permissions.
C	Widget Formatting Toolbar	Rearrange the alignment of widgets in the drag-and-drop window.
D	Configuration Management Panel	Create, open/load, save, and manage UI layouts.
E	Search Bar	Search for a specific control and status parameter.
F	Canvas Properties Panel	Specify properties for the selected canvas, such as size, name, and more
G	Canvases Panel	Access available canvases and options to drag and re-order, add, and delete canvases.
H	Specialty and Design Widgets Panel	Access specialty and design widgets, such as the AMERGINT's system recorder or rectangle.
I	Available Parameters Panel	Access available control and status parameters for the selected canvas.
J	Canvas Design Window	Opens a blank grid space, where you can access and design canvases.



www.arka.org
 @AMERGINT
 @AMERGINT
 amergint-technologies

FOR ADDITIONAL INFORMATION:

2315 Briargate Pkwy., Suite 100
 Colorado Springs, CO 80920 USA
 Tel: 719-522-2800 | Fax: 719-522-2010
 Email: info@amergint.com